

FW:01

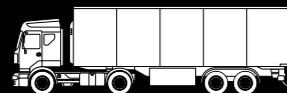
SIZE	LOAD INDEX /SPEED SYMBOL	TYRE DIMENSIONS (mm)				RIM	MINIMAL DUAL SPACING
		SECTION WIDTH	OUTER DIAMETER	STATIC LOADED RADIUS	ROLLING CIRCUMFERENCE		
315/60 R 22.5	152/148 L	313	958	448	2903	9.00	344
315/70 R 22.5	154/150 L (152/148 M)	315	1015	470	3105	9.00	351
295/80 R 22.5	152/148 M	295	1080	493	3233	8.25	326
315/80 R 22.5	156/150 L (152/148 M)	316	1081	503	3303	9.00	351
385/55 R 22.5	158 L (160 K)				In preparation		
385/65 R 22.5	158 L (160 K)				In preparation		
205/75 R 17.5	124/122 M				In preparation		
215/75 R 17.5	126/124 M				In preparation		
225/75 R 17.5	129/127 M				In preparation		
235/75 R 17.5	132/130 M				In preparation		
245/70 R 17.5	136/134 M				In preparation		

M+S marking

TW:01

SIZE	LOAD INDEX /SPEED SYMBOL	TYRE DIMENSIONS (mm)				RIM	MINIMAL DUAL SPACING
		SECTION WIDTH	OUTER DIAMETER	STATIC LOADED RADIUS	ROLLING CIRCUMFERENCE		
315/60 R 22.5	152/148 L	313	964	451	2921	9.00	344
315/70 R 22.5	154/150 L (152/148 M)	315	1030	475	3142	9.00	351
295/80 R 22.5	152/148 M	295	1066	496	3251	8.25	326
315/80 R 22.5	156/150 L (152/148 M)	316	1091	507	3328	9.00	351
205/75 R 17.5	124/122 M				In preparation		
215/75 R 17.5	126/124 M				In preparation		
225/75 R 17.5	129/127 M				In preparation		
235/75 R 17.5	132/130 M				In preparation		
245/70 R 17.5	136/134 M				In preparation		

M+S marking



FW:01 TW:01



FW:01 TW:01



FW:01
FW:01
TW:01



Products designed for use over long and medium distances under critical weather conditions (below 4°C) and on snow covered surfaces.

FW:01 TW:01



WINTER 01 SERIES. NOW WINTER IS SAFER.



pirelli.com



POWER IS NOTHING WITHOUT CONTROL



POWER IS NOTHING WITHOUT CONTROL

In critical conditions, the best performance.

Pirelli makes a further commitment to road safety by expanding the Series:01. The new FW:01 and TW:01 are designed to provide maximum performances in critical winter conditions. Focusing on traction, grip and braking distance. The combination of an advanced rubber compound and innovative tread pattern ensure extremely high standards of safety even in case of heavy snowfall and very low road surface temperatures.

ECDIMPACT



Winter Grip

- Safety and mileage in demanding winter conditions.



Energy™ Efficient

- Low rolling resistance and reduction of fuel consumption and CO₂ emission.



High Retreadability

- Reusable tyres, thanks to high retreadability and its recyclable highly aromatic oil free (HAOF) materials.



Low Noise

- Lower noise emission and high acoustic comfort.
- Fulfils (2012) EC Directive.

NEW TREAD PATTERNS: GRIPPING SAFETY.

- Thanks to this new concept of 'winter' tyre design, with dense and thin siping, these new lines FW:01 and TW:01 are ideal for equipment on coaches, providing excellent acoustic comfort and high mileage.
- Increased tread width promotes mileage.



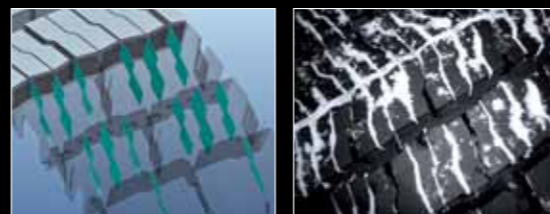
FW:01

- New shoulder tread contour for a correct distribution of footprint contact pressure:
 - even wear;
 - mileage.
- Dense siping provides excellent grip and steering control on wet surfaces.
- Deep siping in central rib bridges promote traction and snow grip beyond half tyre wear.



TW:01

- The optimised sequence of dense transversal siping and grooves promote snow trapping providing excellent 'snow on snow' grip for better traction and stability.
- Directional tread pattern optimises grip on both wet and dry surfaces.
- Reduced tread block mobility limits rolling resistance, promotes fuel saving and enhances even wear.



Dual Layer Tread Compound with high silica content (2 Pirelli Patents pending)

- improved wet grip
- low heat generation for better rolling resistance and integrity
- better resistance at low temperature



Fully Rubberized Cord for Belt

- Total compound penetration enhancing casing fatigue resistance



Three Sandwich Belts evolution

- enhanced even wear
- extended tyre life
- retreadability
- handling



Hexa Bead Wire

- Cerchietto a filo esagonale
- high flexibility for easy fitting
- retreadability

